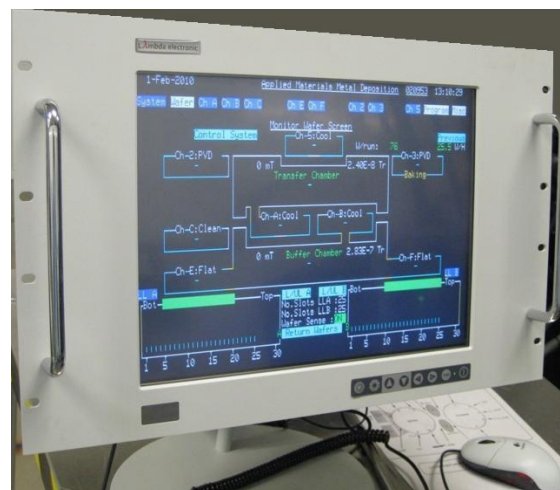


FLAT PANEL Monitor is applicable for the following systems:

Applied Materials

150/ 200mm Centura
150/ 200mm Endura
150/ 200mm Implanter
150/ 200mm Producer
150/ 200mm P5000

Lambda 15 LEPM (En)



Energy Flat Panel Monitor

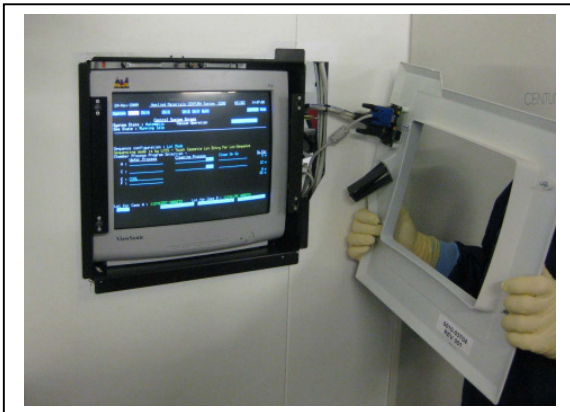
Technical Product Description & Benefits

- 15" LCD/TFT Monitor with touch screen replaces CRT monitor
- Operating with Mouse or existing Lightpen and switch (PnP)
- Reduced power utilization (CRT's : 90 W, LCD 40 W)
- Reduced package size (Height 15.5 inch, Width 19.5 inches, Depth ~6 inches)
- Increased screen luminescence
- Increased mean time between failures (MTBF)
- Ergonomic Interface

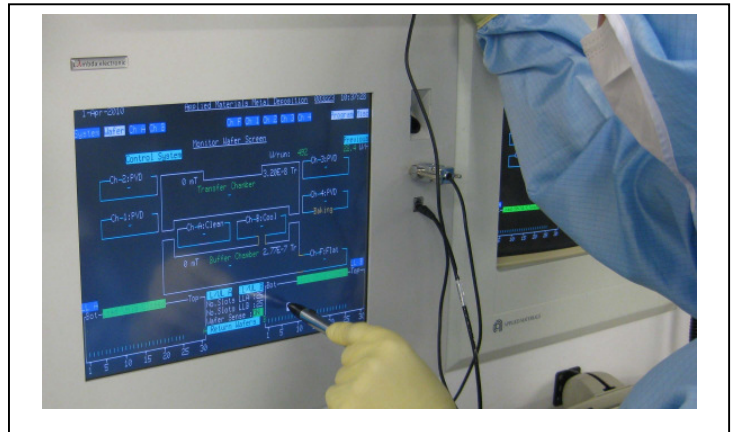
Mounting

- Through the Wall (Replace of current monitor's bezel and mounting)
- Stand Alone with table desk top base
- Wall Anchored (through wall mount pantograph)

Before (old CRT):



After: new Monitor – Lambda 15 LF (En)



Left: Lambda LCD Monitor – Right: CRT Monitor

